



DUSTON

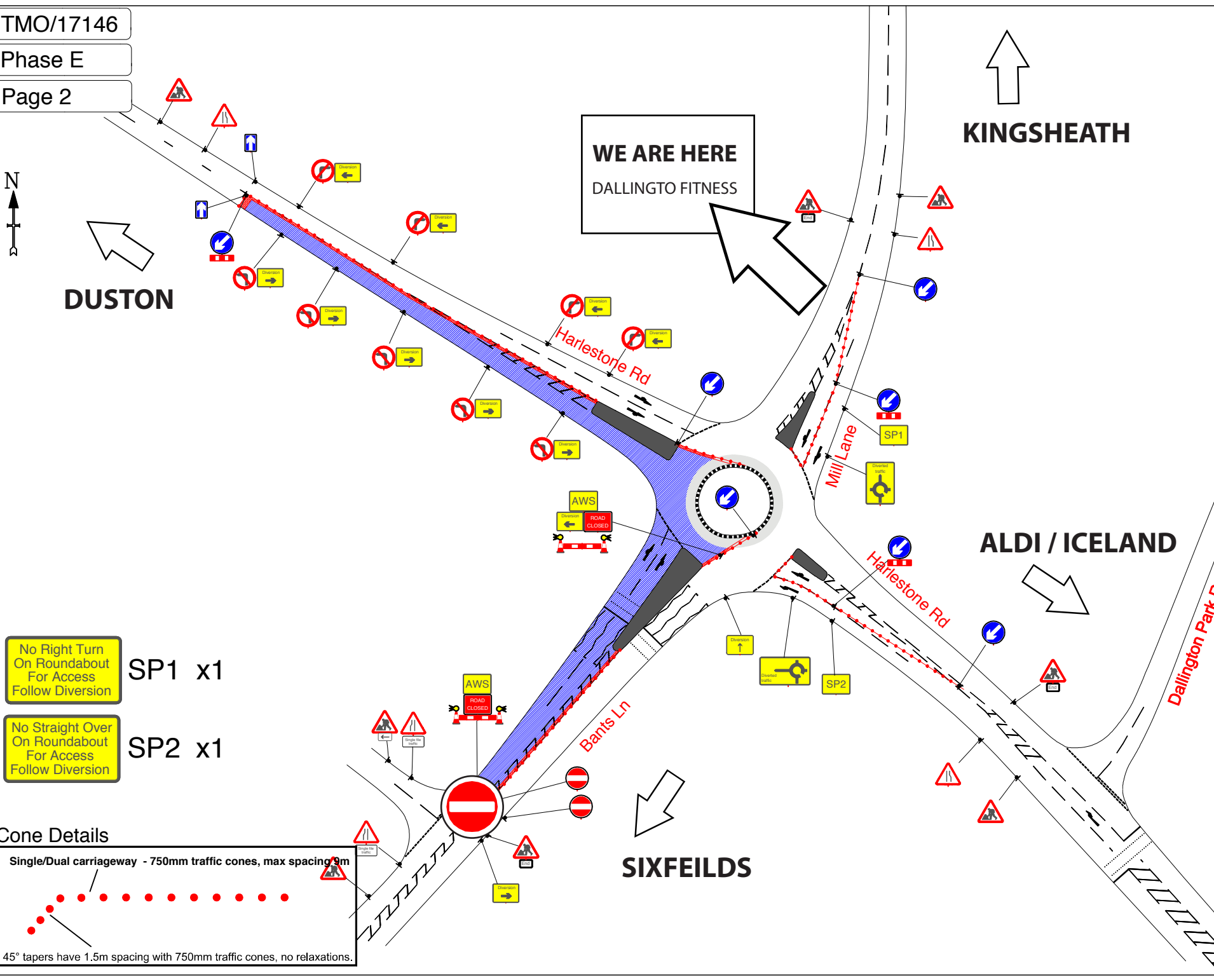
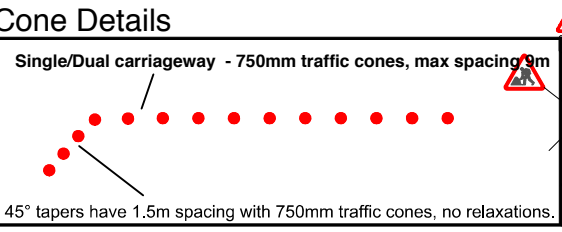
KINGSHEATH

**WE ARE HERE**  
DALLINGTO FITNESS

ALDI / ICELAND

SIXFEILDS

- SP1 x1  
No Right Turn On Roundabout For Access Follow Diversion
- SP2 x1  
No Straight Over On Roundabout For Access Follow Diversion



Safety Zone (longitudinal)	Safety Zone (sideways)
0.5m	0.5m



**TMO Highways**  
19C  
Diss Business Park  
Diss  
Norfolk  
IP22 4GT

**Customer Details:**  
**KIER**  
DEFINING TOMORROW'S ENVIRONMENTS  
Customer Ref:  
Contact: Paul Newsome

**Drawing Details:**  
TM Type : PROJECT  
Location: Harlestone Road, Northampton, NN5 6BX

**DRAWN/REVISED**

Drawn by	RS	Revised by	-	Revision number	00
Date		Date			

Planner: Ryan Smith  
Email: ryan.smith@tmohighways.co.uk

**PLEASE NOTE :**  
a. All Traffic Management to comply with current chapter 8 and Safety at Street Works and RoadWork's (A code of practice).  
b. All road markings and signage to conform to the Traffic Signs Regulations and General Directions 2002.

c. All permanent traffic lights heads will be switched off and bagged at all times that temp signals are in operation, with authorisation from the appropriate authority.  
d. Countdown Signage  
Countdown Signage spacing not shown

Legend:  
 Traffic Cone  
 Datum Point  
 No Parking Cones  
 Works Area  
 Safety Zone